



ASSEMBLY INSTRUCTION

etherCON® TOP Cable Connector

NE8MX-B-TOP & NE8MX-B-TOP-14
Ruggedized RJ 45 Data Connector



IP 65 RATED

TECHNICAL INFORMATION

- NE8MX-B-TOP includes black chuck for cable diameters of 5.0 - 8.0 mm
- NE8MX-B-TOP-14 includes white chuck for cable diameters of 8.0 - 10.0 mm

1 CABLE ASSEMBLY

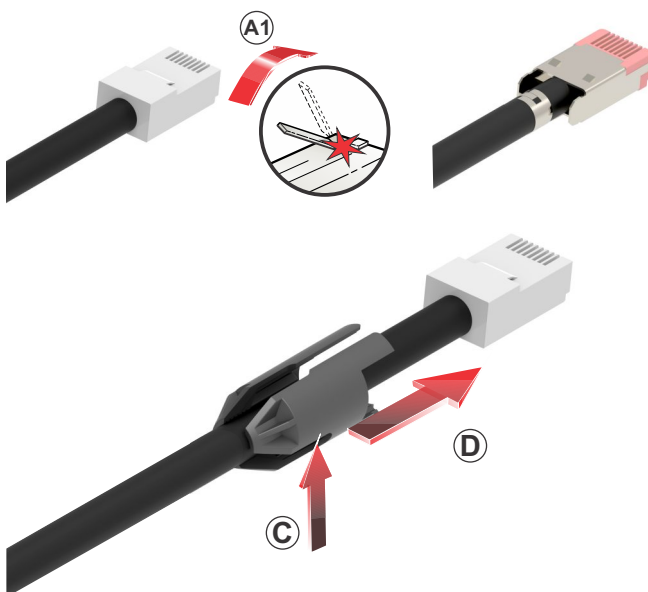


A Slide the bushing over the cable.

B A cable lubricant can be used to simplify the boot assembly, especially for large cable diameters.

2 ASSEMBLY RJ45 PLUG AND CONNECTOR

A STANDARD VERSION **B** SPECIAL VERSION



Assemble the RJ45 plug on the cable.

A Standard Version:

A1 Cut off the release tab of RJ45 plug.

B Special Version

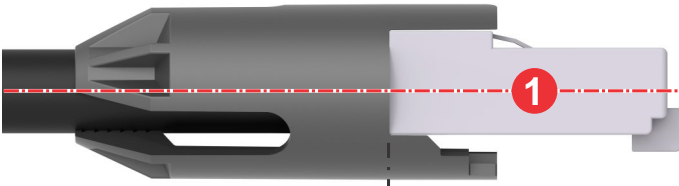
C Put the chuck onto the cable.
Align the opening with the contact side.

■ Black chuck = 5.0 - 8.0 mm

■ White chuck = 8.0 - 10.0 mm



STANDARD
VERSION

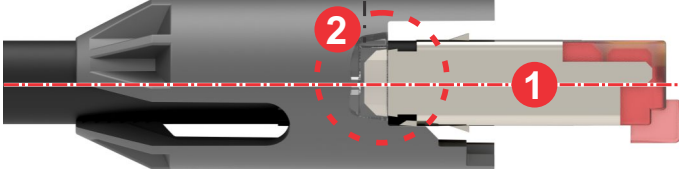


Ⓓ Position the RJ45 in the chuck.

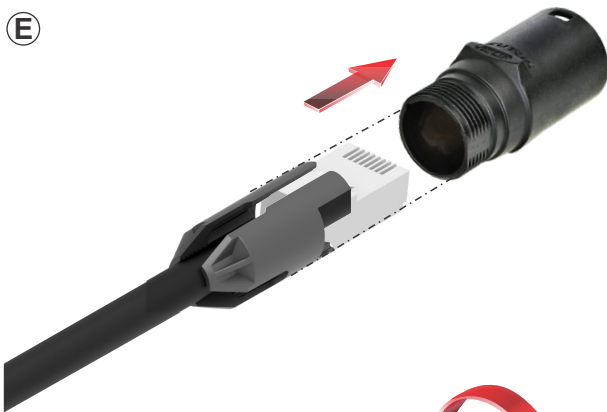
Attention:

- 1 RJ45 must be straight.
- 2 Special versions must engage in the inner recess of the chuck.

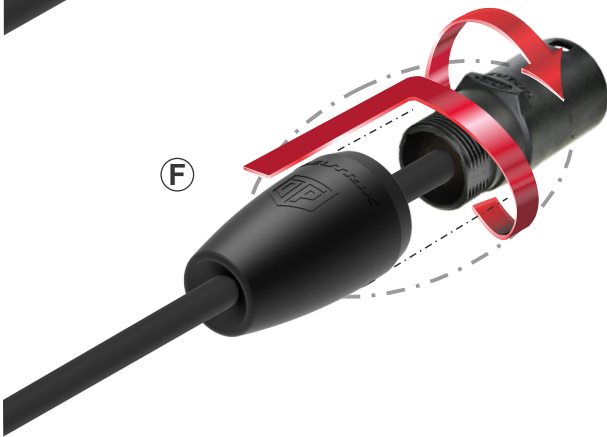
SPECIAL
VERSION



Ⓔ



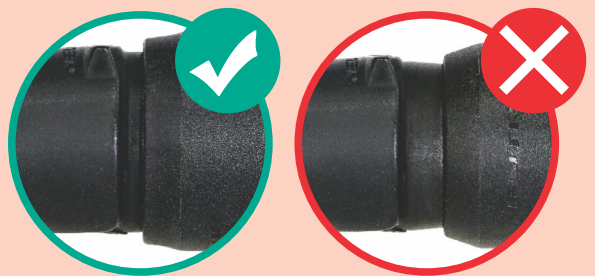
Ⓔ Position the unit (RJ45 and chuck) into the housing.



Ⓕ Slide the bushing onto the housing and tighten it.

Attention:

Screw the bushing to the end of the thread.



Ⓖ



Ⓖ CAUTION:

There is no overlap allowed.



FINISHED etherCON®



Find more etherCON® details on www.neutrik.com.



Neutrik AG	LI	T: +423 / 237 24 24	F: +423/232 53 93
Neutrik Americas Inc.	USA	T: +1 704 / 972 3050	F: +1 704/438 9202
Neutrik (UK) Ltd.	UK	T: +44 1983 / 811 441	F: +44 1983/811 439
Neutrik Vertriebs GmbH	DE/NL/AT/DK	T: +49 8131 / 280 890	F: +49 8131/280 830

Neutrik France	FR	T: +33 1/4131 6750	F: +33 1/4131 0511
Neutrik Tokyo Ltd.	JP	T: +81 3/3663 4733	F: +81 3/3663 4796
Neutrik Hong Kong Ltd.	HK	T: +852/2687 6055	F: +852/2687 6052

Draft. Nr.: BDA 662 V1 | Update: 2022-09-26 | Data subject to change without prior notice. © 2022 NEUTRIK®. NEUTRIK® are registered trademark of Neutrik AG. ALL RIGHTS RESERVED.